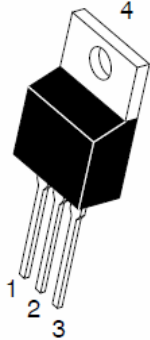


TSR40S 50CT

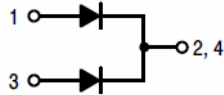
TSR40S150CTF

7 UHQFK 026 %DUULHU 6FKRWWN\ 5H

TO-220AB
TSR40S150CT



ITO-220AB
TSR40S150CTF



Features

- ‡ \$GYDQWUHQFK WHFKQRORJ\
- ‡ /RZRZURGRWDJH GURS
- ‡ /RZRZURVVHV
- ‡ +LJKILFLHQF\ RSHUDWLRO
- ‡ /HDGH)HLQLVK &R#6OLDQW

Applications

- ‡ '&' &RQYHUWHUV
- ‡ \$&'&GDSWRUV
- ‡ 6ZLWFKRZHXSSOLHV
- ‡)UHHZKH)HLGRQJ

Maximum ratings and electrical characteristics (T_J = 25°C unless otherwise noted)

| 3DUDPHWHU | | 6\PERO | /LPLW | 8QLW | |
|---|-------------------|--------|-------|------|------|
| 0D[LPXPHSHVSHUNYHYURQHW DJH | | 9550 | | 9 | |
| 0D[LPXPHYHURJHZDUG UFKUWHIHWG | GHYLFH SHGLRGH | ,) \$9 | | \$ | |
| 3HDN IRVZDUEBUUHQW VLKDOHQH ZDYH VXSHULPSRVHGRFSGUDRVGHG | | ,)60 | | \$ | |
| 2SHUDMXQDQGRQWRUDJH WHPSHUDW | XUHURDJH | WR | | f& | |
| 7\SLFVCHUPDO USHVULVQHDQFH | 72 \$% | 5\$-& | | f& : | |
| | ,72 \$% | | | f& : | |
| ,QVWDQWDQHRXURVURJHZDUG SHGLRGH | | 9) | 7 < 3 | 0\$; | |
| | ,) 2\$ | | 7- f& | 43 | 48 |
| | ,) 2\$ | | 7- f& | 38 | |
| | ,) 1\$ | | 7- f& | 0.73 | 0.79 |
| | ,) 1\$ | | 7- f& | 0.68 | |
| ,QVWDQWDQHRXUUSHVURVURJHZDUG UDWHYHYURQHW DJH | 7- f& | ,5 | | X\$ | |
| | 7- f& | | | P\$ | |

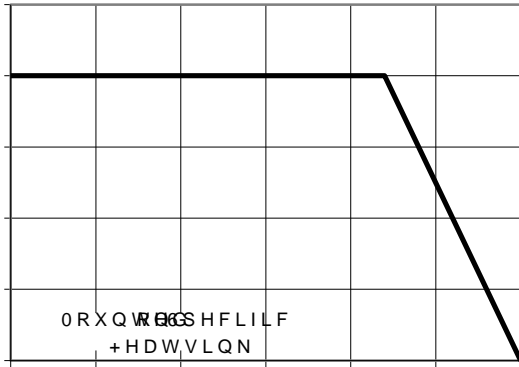
1RWHV

3XOVH WHVVSXOVH ZLGWK GXW\F\FOH

3XOVH WHVW 3XOPVH ZLGWK 0

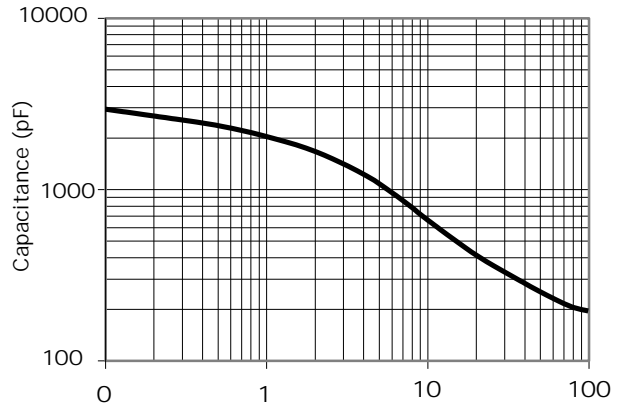
.I \$YHUDJH)RUZDUG &XUJHQW

RATINGS AND CHARACTERISTICS CURVES (TA = 25 °C unless otherwise noted)



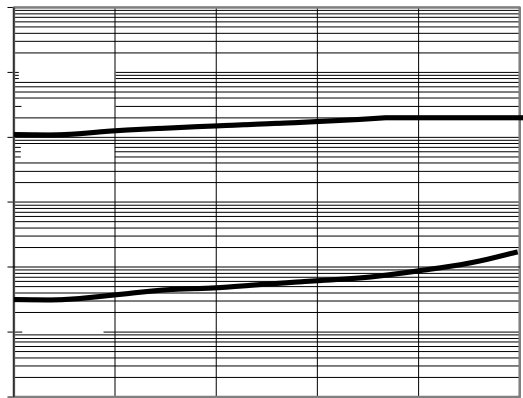
7 F&DV7HP S&

Current Derating, Case



5 HYH 9 R 10 W 9 JH

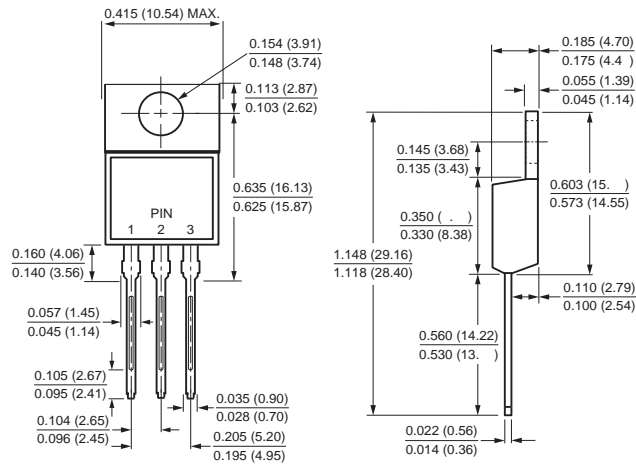
Typical Junction Capacitance



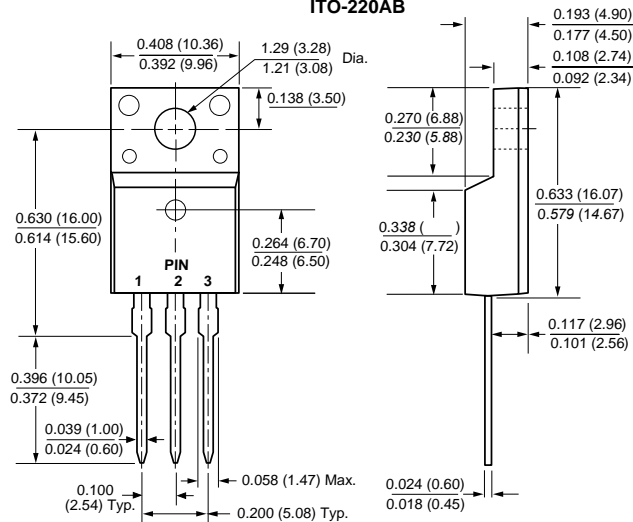
PACKAGE OUTLINE DIMENSIONS

Note:unit In(mm)

TO-220AB

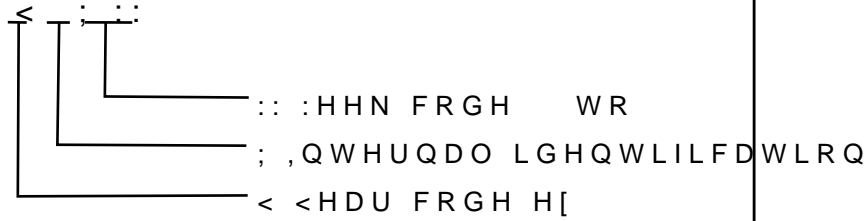


ITO-220AB



Marking Information

: &RPSDQ\ V WUDGHPDUN
83URGXFW P65GHO &7 RU 765 6 &7)
93'& LQIRUFDWLRQ



Packaging Information

7XEH 'LPHQVLRQV

,QVLGH %R[

2XWVLGH %R[

Packaging Information